

2435 POLK STREET

SAN FRANCISCO CA 94109

± 2,475 SQ FT OFFICE SPACE FOR LEASE



PROPERTY OVERVIEW

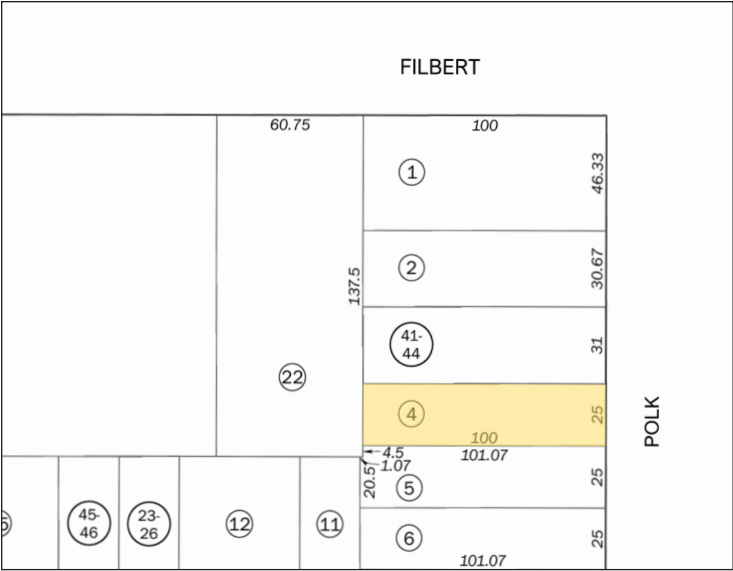
2435 POLK STREET

Lease Rate	\$33 PSF M.G.
Unit Size	± 2,475 Sq Ft
Cross Street	Filbert Street
Year Built	1980
Zoning	NCD

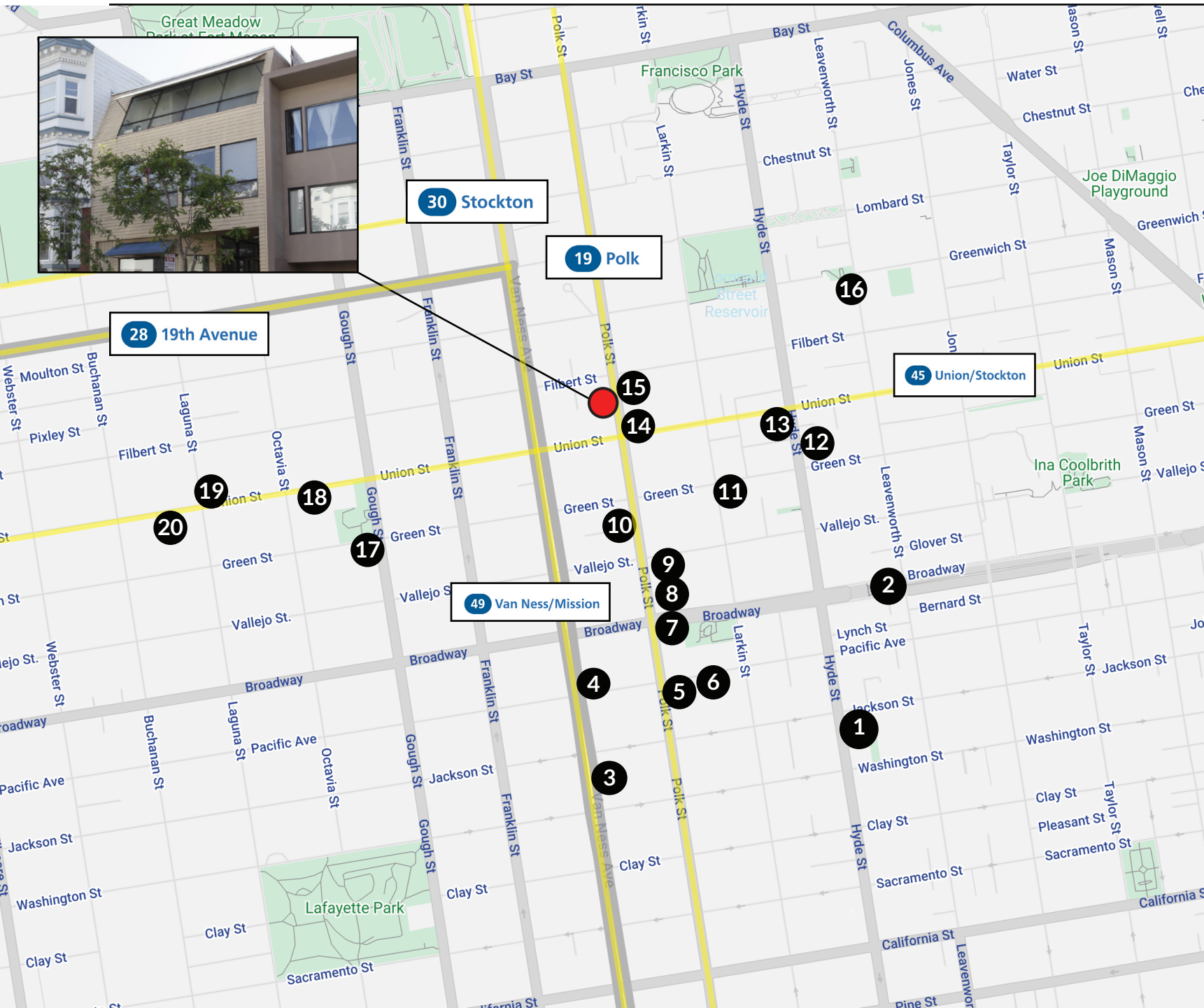
2435 Polk Street is a two-level office space with approximately 2,475 square feet located in the heart of the Russian Hill neighborhood in San Francisco.

This space was designed with the objective to provide an abundance of natural light on each floor. Using skylights, large windows on both the façade and rear, plus exposed Douglas Fir beams, 2435 Polk Street has an open, airy, and natural feel. It also features open work areas, private offices, and an exclusive outdoor deck with spectacular views.

The space is well-located on Polk Street, which has a steady flow of both vehicle and foot traffic in the desirable neighborhood of Russian Hill. 2435 Polk Street is close to cafés, restaurants, and many well-established local businesses. There is also easy access to public transportation and neighboring districts such as the Marina, Cow Hollow, and Pacific Heights.



LOCATION MAP



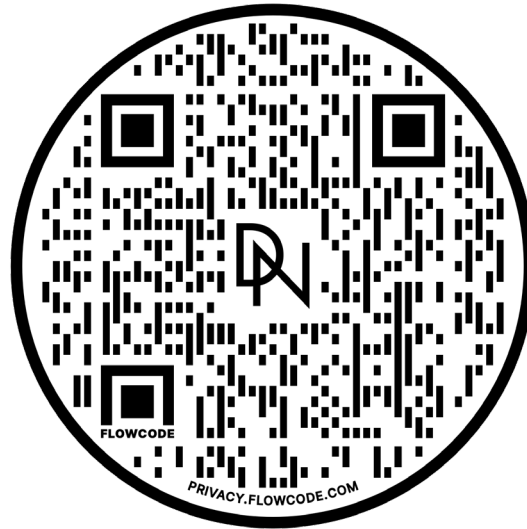
LOCATION MAP

- 1) Hot Sauce & Panko
- 2) Robert C Levy Tunnel
- 3) House of Prime Rib
- 4) Harris' Restaurant
- 5) Cafe Reveille
- 6) Stuff Antique Store
- 7) Shanghai Kelly's
- 8) Walgreens
- 9) Russian Hill Bookstore
- 10) Blue Barn
- 11) Amarena Italian
- 12) Swensen's Ice Cream
- 13) Starbucks
- 14) Leopold's
- 15) Fueling Station Cafe
- 16) Lombard Street Scenic Route
- 17) Blue Fog Market
- 18) Roam Artisan Burgers
- 19) Yoga Flow
- 20) The Italian Homemade Company





COMPASS COMMERCIAL



Scan the QR code for more information about
2435 Polk Street.

LENA KWANG

Lena@theDNgroupSF.com

714.313.0585

DRE 02156531

DAVIS NGUYEN

Davis@theDNgroupSF.com

415.412.5703

DRE 01509978

CONFIDENTIALITY & DISCLOSURE

Compass is a real estate broker licensed by the State of California and abides by Equal Housing Opportunity laws. License Number 01991628, 01527235, 1527365. All material presented herein is intended for informational purposes only and is compiled from sources deemed reliable but has not been verified. Changes in price, condition, sale or withdrawal may be made without notice. No statement is made as to the accuracy of any description. All measurements and square footage are approximate.