

4220 CALIFORNIA STREET

SAN FRANCISCO CA 94118

± 1,380 SQ FT OFFICE SPACE FOR LEASE



THE  GROUP

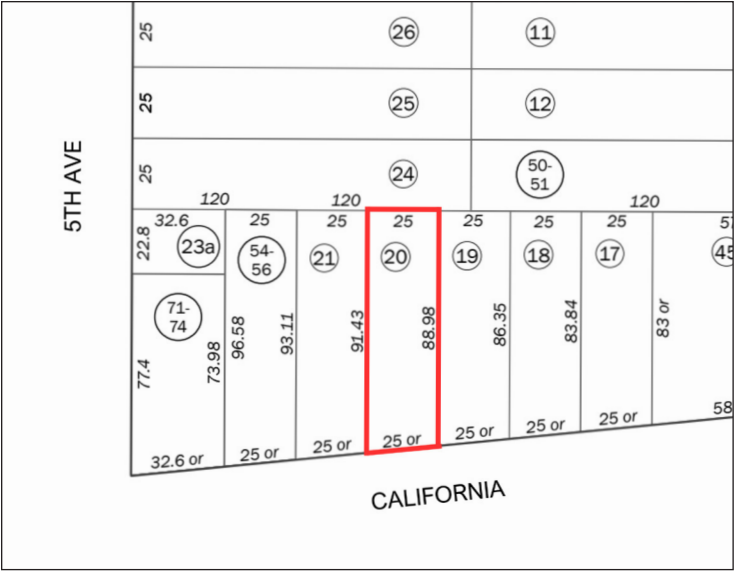
PROPERTY OVERVIEW

4220 CALIFORNIA STREET

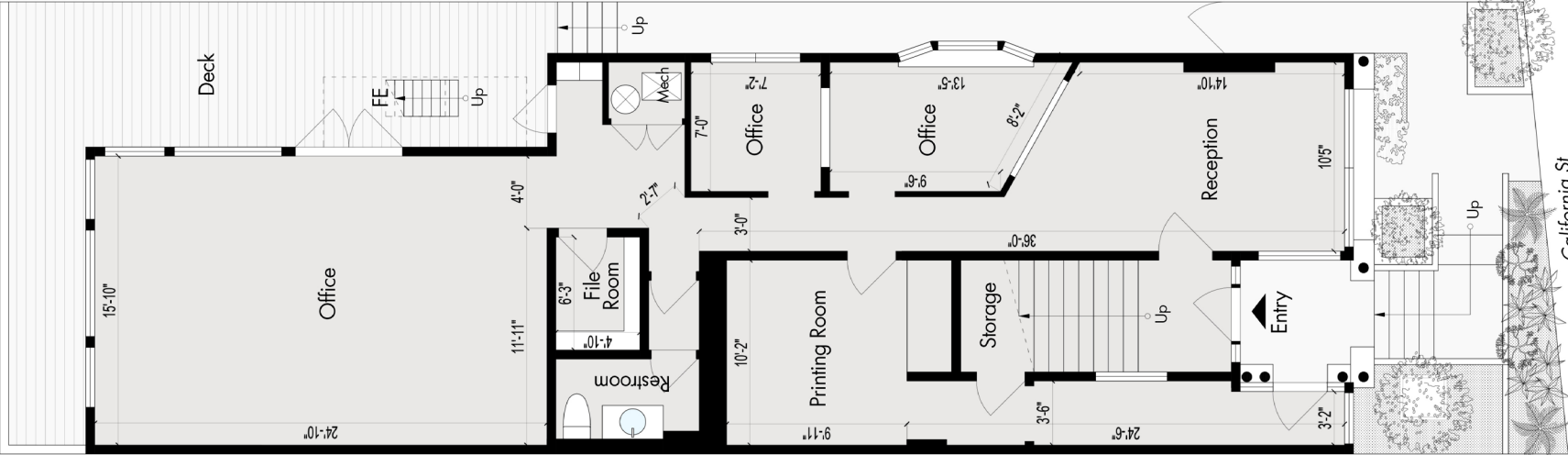
Lease Rate	\$48 PSF M.G.
Square Feet	± 1,380
Lot Sq Ft	± 2,256
Zoning	NC-1
Year Built	1902

4220 California Street is a ground-floor office space with approximately 1,380 square feet located in the heart of the Inner Richmond neighborhood in San Francisco. This space features open work areas, private offices, and an exclusive outdoor patio.

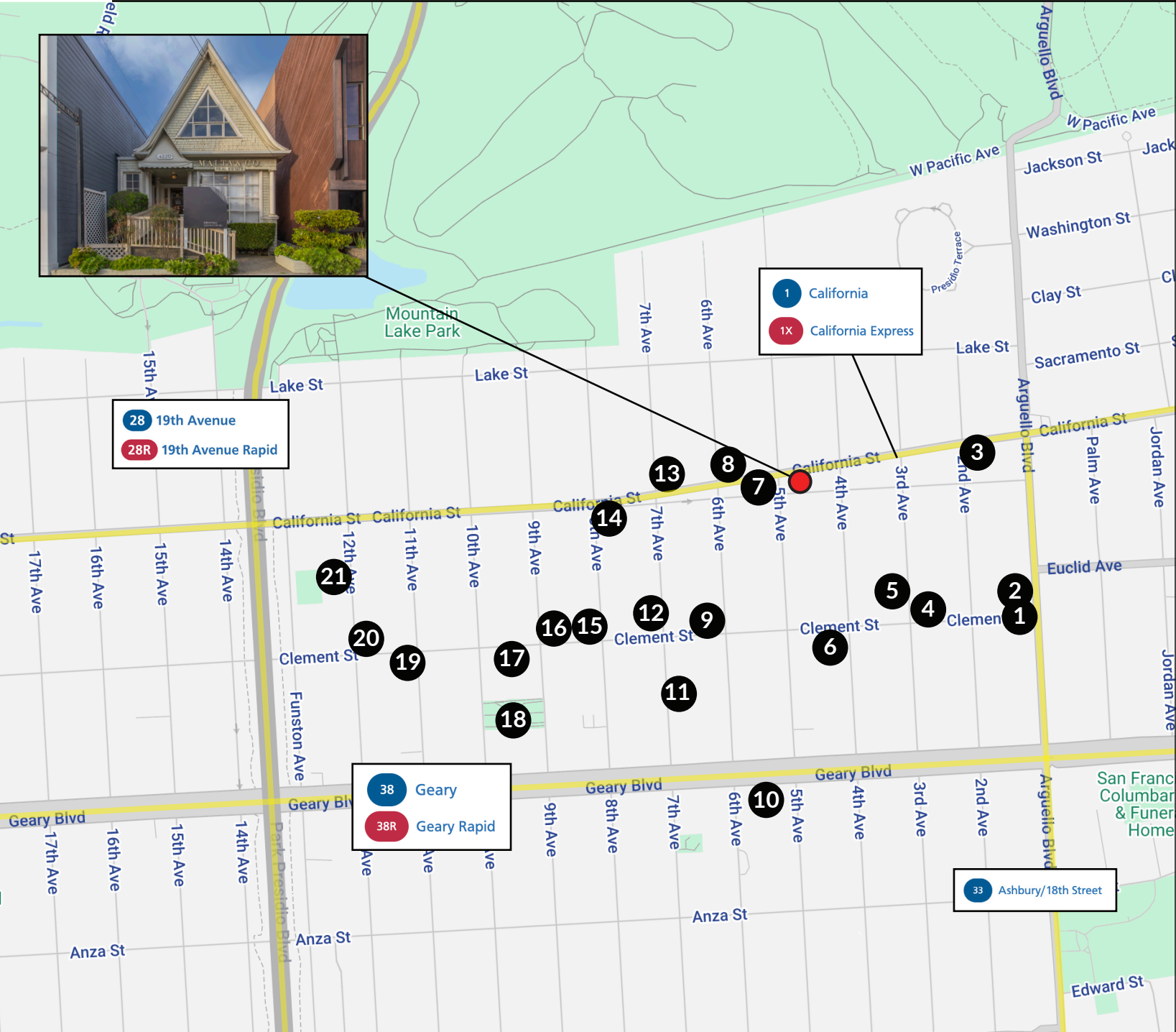
The space is well-located on California Street, which has a steady flow of both vehicle and foot traffic and offers significant brand visibility. 4220 California Street is close to cafés, restaurants, and many well-established local businesses. With easy access to public transportation and many nearby amenities, it's a convenient and functional office for a variety of business.



FLOOR PLAN



LOCATION MAP



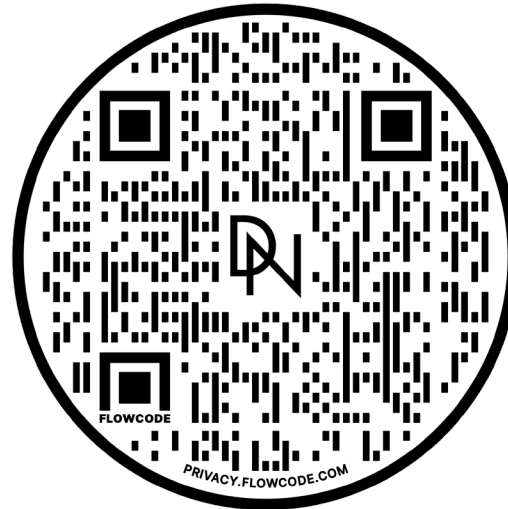
LOCATION MAP

- 1) Brecks
- 2) Arsicult Bakery
- 3) The Avenues Spa
- 4) Ace Hardware
- 5) Palmetto Superfoods
- 6) Burma Superstar
- 7) The Richfield
- 8) Mandalay Restaurant
- 9) Green Apple Books
- 10) Kaiser Permanente
- 11) Smart & Final
- 12) Bank of America
- 13) Ashley's Cafe
- 14) Beanstalk Cafe
- 15) Heritage Restaurant & Bar
- 16) See's Candies
- 17) Lost Marbles Brewery
- 18) Richmond Branch Library
- 19) Richmond Clay House
- 20) Healthy Spirits
- 21) Sutro Elementary School





COMPASS COMMERCIAL



Scan the QR code for more information about
4220 California Street.

DAVIS NGUYEN

Davis@theDNgroupSF.com

415.412.5703

DRE 01509978

LENA KWANG

Lena@theDNgroupSF.com

714.313.0585

DRE 02156531

CONFIDENTIALITY & DISCLOSURE

Compass is a real estate broker licensed by the State of California and abides by Equal Housing Opportunity laws. License Number 01991628, 01527235, 1527365. All material presented herein is intended for informational purposes only and is compiled from sources deemed reliable but has not been verified. Changes in price, condition, sale or withdrawal may be made without notice. No statement is made as to the accuracy of any description. All measurements and square footage are approximate.