

55 POTRERO AVENUE

SAN FRANCISCO CA 94103

WAREHOUSE/SHOWROOM BUILDING FOR SALE/LEASE



DAVIS NGUYEN | Davis@theDNgroupSF.com | 415.412.5703 | DRE 0150997

THE  GROUP

PROPERTY OVERVIEW

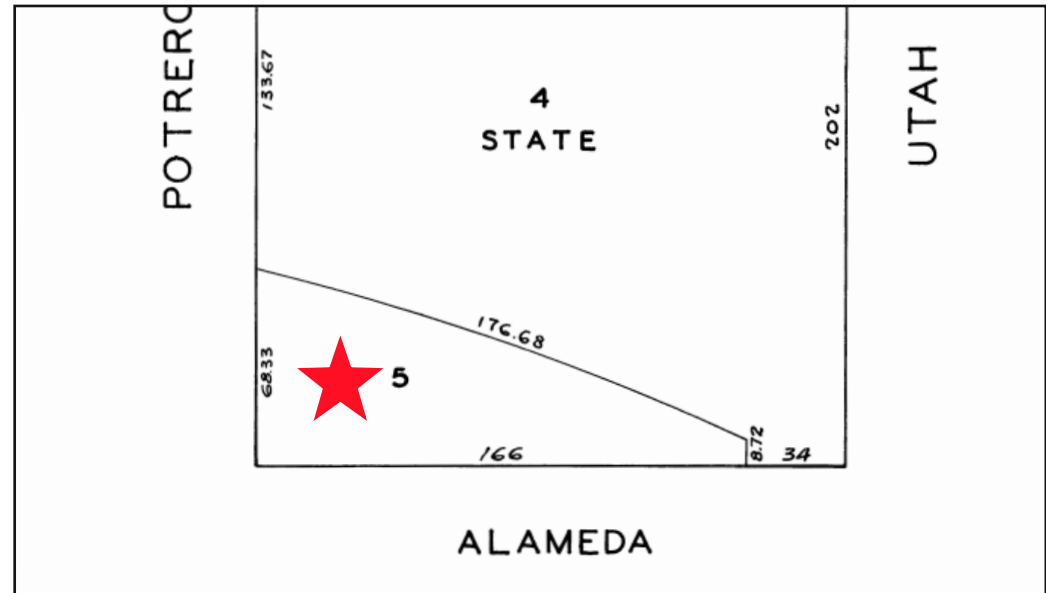
55 POTRERO AVENUE

San Francisco CA 94103

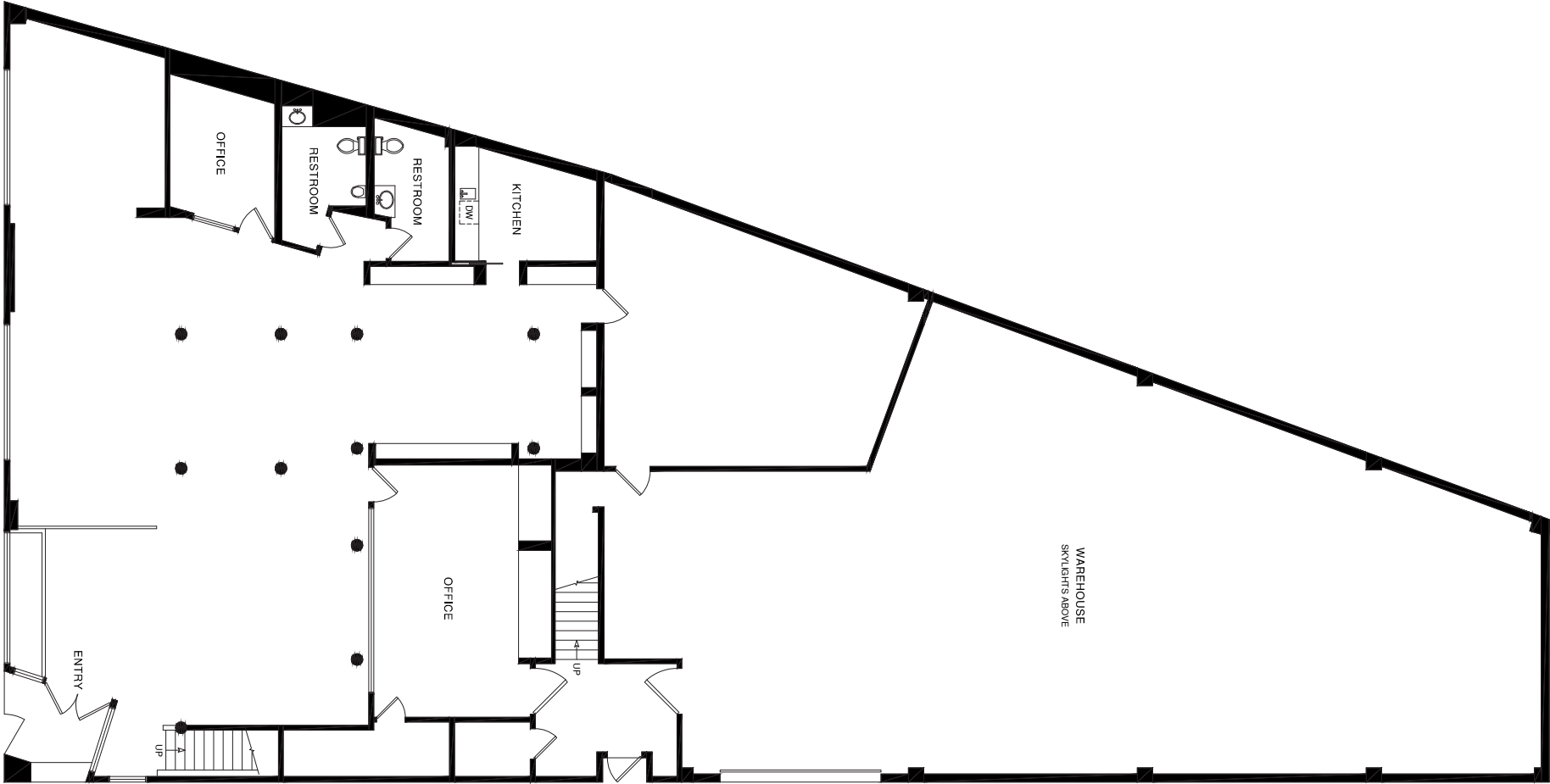
Compass Commercial is pleased to present the opportunity to purchase or lease a premier warehouse/showroom building situated in the Showplace Square District of San Francisco. 55 Potrero Avenue consists of two floors with approximately 9,455 square feet and is situated on a 6,830 square foot lot. The property features an open floor plan on the ground floor with a roll-up door, a private office, a kitchen, high ceilings, and skylights that provide an abundance of natural light. The second floor has large windows, three office areas, and two restrooms.



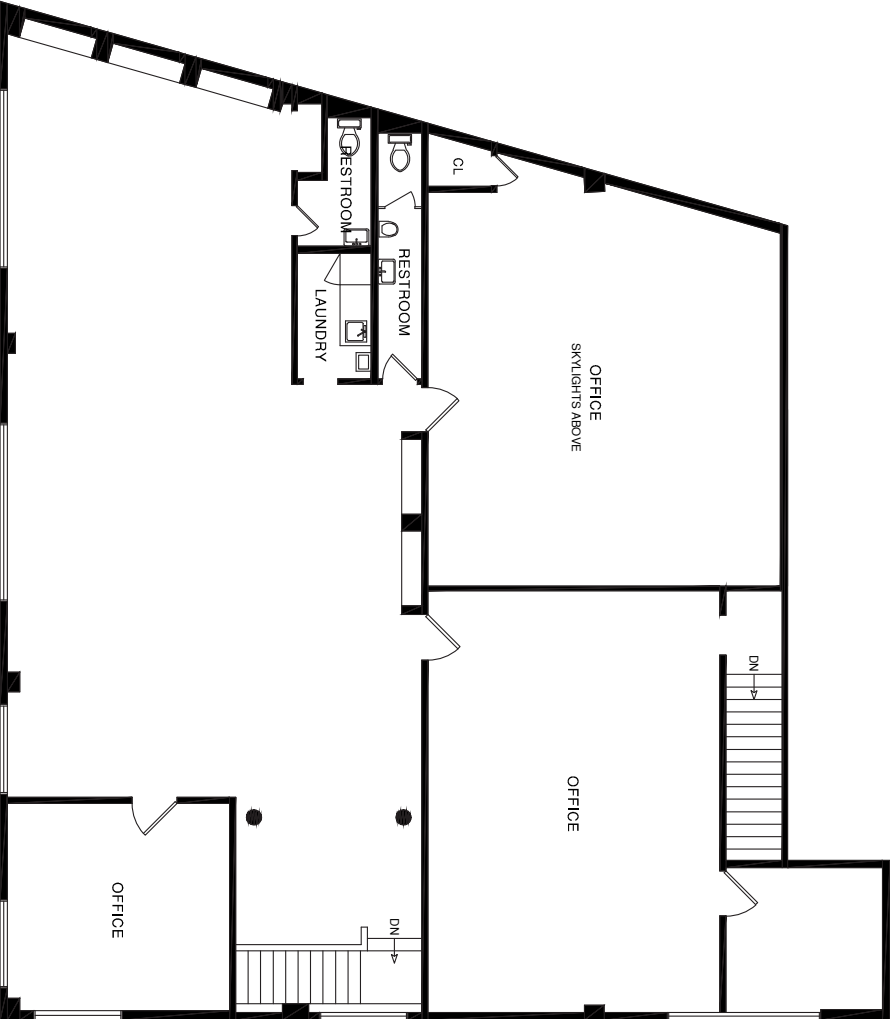
Asking Price	Please Call
Asking Rent	Negotiable
Building SqFt	± 9,455
Lot SqFt	± 6,830
Zoning	PDR-1-G
APN	3907-005



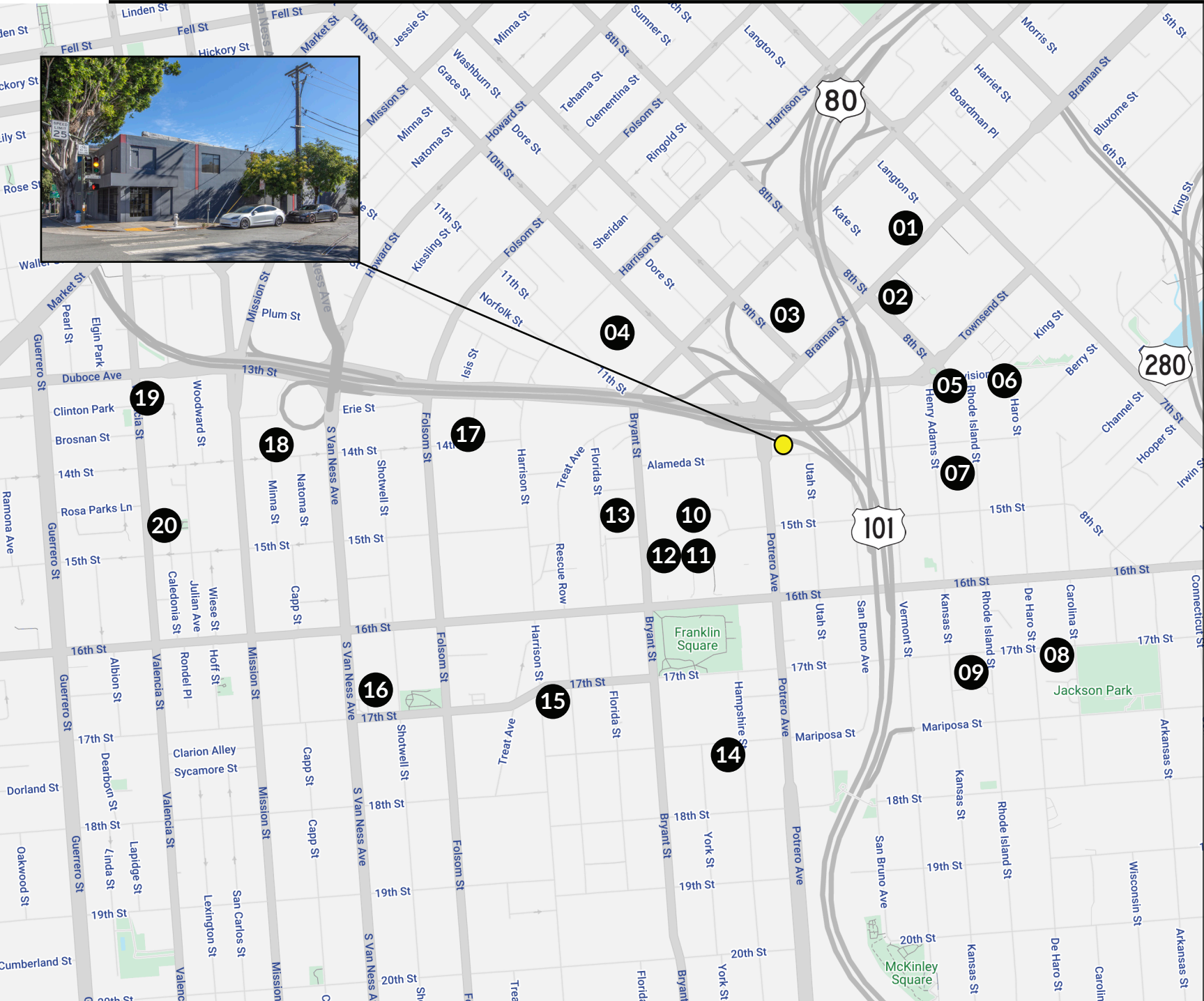
FLOOR PLAN - GROUND FLOOR



FLOOR PLAN - 2ND FLOOR



LOCATION MAP



LOCATION MAP

- 1) REI
- 2) Peet's Coffee
- 3) Trader Joe's
- 4) Costco Wholesale
- 5) Niku Steakhouse
- 6) Dumpling Time - Design District
- 7) San Francisco Design Center
- 8) Philz Coffee
- 9) Whole Foods
- 10) Safeway
- 11) Noah's NY Bagels
- 12) Petco
- 13) Sports Basement
- 14) The Morris
- 15) Gus's Community Market
- 16) Mission Bowling Club
- 17) Pink Onion
- 18) Standard Deviant Brewing
- 19) Burma Love
- 20) Four Barrel Coffee

Nearby MUNI

- 9 San Bruno
- 8 Bayshore
- 3 Ashbury/18th St











COMPASS COMMERCIAL



Scan the QR code for more information about
55 Potrero Avenue.

DAVIS NGUYEN

Davis@theDNgroupSF.com

415.412.5703

DRE 01509978

CONFIDENTIALITY & DISCLOSURE

Compass is a real estate broker licensed by the State of California and abides by Equal Housing Opportunity laws. License Number 01991628, 01527235, 1527365. All material presented herein is intended for informational purposes only and is compiled from sources deemed reliable but has not been verified. Changes in price, condition, sale or withdrawal may be made without notice. No statement is made as to the accuracy of any description. All measurements and square footage are approximate.